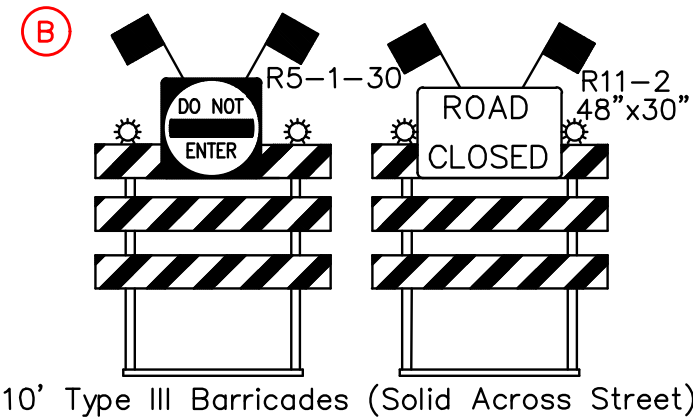
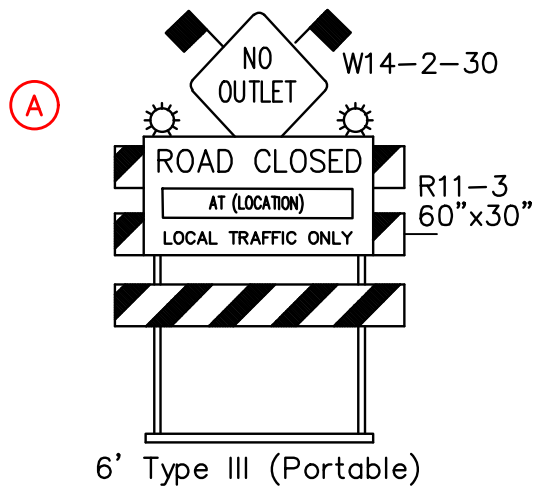


**NOTE**

MAINTENANCE OF TRAFFIC AND PHASING: THE CONTRACTOR SHALL COMPLETE THE RECONSTRUCTION OF DIETZ DRIVE IN TWO PHASES TO ENSURE ALL CONNECTING RESIDENTIAL NEIGHBORHOODS MAINTAIN ACCESS DURING CONSTRUCTION. THE PHASE LINE SHALL BE LOCATED BETWEEN BUCKNER STREET AND ROSEMOUNT WAY HOWEVER THE LOCATION MAY BE AS DESIGNATED BY THE CONTRACTOR WITHIN THIS SEGMENT. SIDE STREET CONNECTIONS AT GREENVIEW VILLAGE DRIVE, ROSEMOUNT WAY AND BUCKNER STREET AVENUE MAY BE CLOSED DURING RECONSTRUCTION OF THE STREET DURING EACH RESPECTIVE PHASE. THE SIDE STREET CONNECTION AT CONNER AVENUE CLOSURE SHALL BE LIMITED TO WORKING HOURS ONLY WITH TEMPORARY ACCESS PROVIDED DURING THE RESPECTIVE PHASE OF CONSTRUCTION. THE CONTRACTOR SHALL COORDINATE DIRECTLY WITH THE EIGHT RESIDENTS ALONG DIETZ DRIVE WHO'S DRIVEWAYS CONNECT TO DIETZ DRIVE WITHIN THE LIMITS OF RECONSTRUCTION FOR TEMPORARY ACCESS DURING CONSTRUCTION.



**SIGN LEGEND**

CITY OF CANAL WINCHESTER, FRANKLIN COUNTY, OHIO  
EXHIBIT 4

**FOR  
2022 STREET PROGRAM  
DIETZ DRIVE RECONSTRUCTION MOT**

DATE: DECEMBER 2021

SCALE: 1" = 200'

JOB NO.: 2021-1362

**EMHIT**  
Evars, Mechwart, Hambleton & Tilton, Inc.  
Engineers • Surveyors • Planners • Scientists  
5500 New Albany Road, Columbus, OH 43054  
Phone: 614.775.4500 Toll Free: 888.775.3648  
emhit.com